



HOUSE of REPRESENTATIVES

STATE OF MICHIGAN

Appropriations Requests for Legislatively Directed Spending Items

1. The sponsoring representative's first name:
Pat
2. The sponsoring representative's last name:
Outman
3. The cosponsoring representatives' names. All cosponsors must be listed. If none, please type 'n/a.' A signed letter from the sponsor approving the co-sponsorship and a signed letter from the member wishing to co-sponsor are required. Attach letters at question #9 below.
Rep. Phil Green
4. Name of the entity that the spending item is intended for:
Sheridan Community Hospital
5. Physical address of the entity that the spending item is intended for:
301 N. Main St., Sheridan, MI 48884
6. If there is not a specific recipient, the intended location of the project or activity:
Sheridan, MI
7. Name of the representative and the district number where the legislatively directed spending item is located:
Rep. Pat Outman, District 91
8. Purpose of the legislatively directed spending item. Please include how it provides a public benefit and why it is an appropriate use of taxpayer funding. Please also demonstrate that the item does not violate Article IV, S 30 of the Michigan Constitution. Sheridan Community Hospital is a Critical Access rural hospital serving Montcalm, Isabella, and Ionia counties since 1944. They have been in their current building since 1950 and are requesting \$10 million in state matching funds for the construction of a new hospital on already owned land. The new hospital and facilities will cost \$40 million in total, but through a federal grant that requires a 25% state match, the state would not be needed to pay the full amount.

The building of a new hospital would not only create 130 new construction jobs for the project, but also 36 full time positions on top of their already 170 employees upon completion. The new expanded facility would increase Sheridan Community Hospital's ability to care for the health of our rural area. With the closing of another nearby hospital last year, Sheridan stands as one of the few healthcare facilities with the equipment to deal with rising healthcare issues. The hospital's expansion, along with the upgraded equipment, would allow them to serve more patients annually.

As a non-profit, rural hospital, Sheridan Community Hospital is a worthy recipient of state funding and in no way would this allocation violate Article IV, S 30 of the Michigan Constitution. Rural healthcare has long been underfunded and the need for greater state funding has long been evident.

9. Attach documents here if needed:

Attachments added to the end of this file.

10. The amount of state funding requested for the legislatively directed spending item.

10000000

11. Has the legislatively directed spending item previously received any of the following types of funding? Check all that apply.

["Federal","State"]

12. Please select one of the following groups that describes the entity requesting the legislatively directed spending item:

Non-profit organization

13. For a non-profit organization, has the organization been operating within Michigan for the preceding 36 months?

Yes

14. For a non-profit organization, has the entity had a physical office within Michigan for the preceding 12 months?

Yes

15. For a non-profit organization, does the organization have a board of directors?

Yes

16. For a non-profit organization, list all the active members on the organization's board of directors and any other officers. If this question is not applicable, please type 'n/a.'

Jerry Rizqallah (Chair), Lili Petricevic (CEO), James Dimitriou (Board Member), Newton Mulama (Board Member), Bobbi McColley (Board Member)

17. "I certify that neither the sponsoring representative nor the sponsoring representative's staff or immediate family has a direct or indirect pecuniary interest in the legislatively directed spending item."

Yes, this is correct

18. Anticipated start and end dates for the legislatively directed spending item:

July 2026-July 2027

19. "I hereby certify that all information provided in this request is true and accurate."

Yes



**SHERIDAN COMMUNITY HOSPITAL NEW HOSPITAL BUILDING
EXECUTIVE SUMMARY**

Sheridan Community Hospital
301 N. Main Street
Sheridan, MI 48884
Lili Petricevic, CEO
lpetricevic@sheridanhospital.com

March 31, 2025

EXECUTIVE SUMMARY

Sheridan Community Hospital (SCH) is a Critical Access rural hospital serving the economically depressed counties of Montcalm, Isabela and Ionia, where the poverty level is 13.3% and Median Household Income is \$53,104 per 2023 Community Assessment. The Hospital is seeking a \$40,000,000.00 Million grant for the construction of a new 61,385 SQ FT facility on currently owned property, adjacent to the current hospital that is intended to be repurposed for community services.

- Non-profit, Non-stock Corporation with 501(c) (3) status.
- Hospital, established in 1944, in current facility since 1950.
- Critical Access Hospital as of: September 1, 2000.
- Current size in sqft. 34,451
- Staffing – 170 employees, 35 contracted employees.
- 14 specialty service lines, including but not limited to: Orthopedics, Neurosurgery, Urology, 24/7 Emergency Room/Walk-in Clinic, Senior Life Services (Psychological Counseling services for seniors).
- Helipad
- The largest employer in its immediate vicinity – including the communities of Sheridan, Stanton, and Edmore, Greenville.
- Serving the economically depressed counties of Montcalm, Isabella and Ionia.
- Request: \$40,000,000.00 total Construction 61,385sqft (or 72,000 with contingencies)
 - o 75% Federal Grant Funding
 - o 25% State Funding
 - o Equipment, supplied by Sheridan Community Hospital.

BACKGROUND

SCH was established in **1944** in a two-story farmhouse on M-66, and has served Montcalm County's population for multiple healthcare needs. In 1950, the latest building was built at 301 N. Main from which we have been serving the community for **75 years**. Sheridan Community Hospital is the largest employer in Sheridan, Stanton and Edmore. We employ **170 full time/part time employees and 35 contracted employees**. The current Executive Board, along with the community have made a commitment to continue Sheridan Hospital's legacy and fulfill the healthcare needs of our population. Given that we are dealing with a **75-year-old structure**, and as building codes and patient's needs have changed, the facility is well beyond its useful life span. The hospital is seeing daily challenges in maintenance and competition from much newer, urban, state of the art facilities. For example, the hospital is not able to provide full care of bariatric patients with obesity diagnosis, as patient room doors are too narrow. Building codes from 1950 did not require wide doors. The boiler, although heating very well, has daily issues due to old pipes and requires continuous maintenance. In addition, several equipment items are due for upgrades and modernization. There is a need for additional office space that is HIPAA compliant, which currently does not exist. Our Administration Building, previously a local residence that was converted to office space, which does not suit the task. With this history, the existing building is unable to be properly renovated, hence the need for a new building.

While patient satisfaction scores reflect great feedback related to staff, doctors, cleanliness and care, they frequently comment on the lack of modern facilities.

In June 2021, a Project Charter Phase I was established with a goal of solidifying our niche, by generating more revenues and increasing our capacity through construction of a new facility on the currently owned land and comprised of the following:

- 2 Operating Suites with procedure room
- 2 Emergency Department Rooms added
- 2 Registration Offices with patient waiting Area combined
- 11 Semi Private Recovery Rooms and 4 Private rooms
- A Radiology Center
- A pharmacy
- A laboratory
- 10 Administration office spaces (2nd story in the building)
- A rehabilitation center with a gymnasium
- Computer Network Server Room
- A Specialty Clinic with separate entrance and 10 exam rooms
- A chapel/Private Prayer room

The estimated Project Cost for phase I completion is anticipated to total approximately **\$40,000,000.00** secured through grant funding. This would allow current revenues to be used to replace the rest of the old equipment. Based on estimates provided by architectural consulting firms, the required funds will go toward the above listed building requirements for building a new facility on existing free space within the current grounds.

Overall, the building is at a level where it requires multiple and constant repairs and the cost of repairs is becoming higher than the cost of replacement or building new a facility.

As shown above there is a great need for a new facility and updated equipment. This will allow Sheridan Hospital to increase revenue and expand medical services as listed below:

Ophthalmology Procedures	Orthopedic Services & Procedures
Urology Services & Procedures	Women's Pelvic Health
Pharmacy	Care of DOC and Jail patients
Wound Care Center of Excellence	Outpatient and Inpatient Rehab
Weight Loss Wellness Program/Center	Community, Diabetic Education Center
Expansion of Walk- In Clinic/ED Services	Cardiology Services
Senior Life Services	Infusion Clinic Expansion
Day Care Center Space	Dialysis Services

Other Community Benefit of the project:

Currently, Sheridan Community Hospital serves Sheridan, Stanton, Greenville, Edmore, and Lakeview residents as well as the population of Canadian Lakes.

We are the largest employer in the Sheridan, Stanton and Edmore areas. Within a radius of 35 miles to the north, Sheridan Community Hospital, as a Critical Access Hospital, has the only and nearest ED department available, especially since the closure of Lakeview hospital by the Corewell system. Our hospital is training to handle trauma level IV and also to stabilize and transfer higher level of traumas to larger centers when properly equipped.

The level of community support is evident by the hospital's longevity and by the support of multiple local businesses as well as the general population. As a non-profit 501(C) (3) organization, we have served this community and neighboring counties since 1944. In 2018-2019, the facility went through a major financial hardship. The overwhelming support and engagement by local community members provided the motivation to seek alternative strategies to keep the facility afloat. This resulted in the creation of an entirely new Executive Board and Executive Leadership, which has since made significant strides towards financial stability. The steady increase in census and services rendered is a testament to the community's desire for Sheridan hospital's survival and growth. We believe that Sheridan Hospital as a Critical Access rural healthcare provider is an essential component for continuing the provision of much needed vital care and healthcare access for this underserved rural community. This request is based on the fact that rural healthcare, especially independent small hospitals are chronically underfunded, while the need for healthcare access near rural homes is vital.

Economic Impact of Building a New Hospital Facility in the area:

Project Size: The new building will cover approximately **72,000 square feet** and include advanced medical facilities, patient rooms, operating theaters, and support services.

Timeline: The construction is expected to take around 18-24 months from groundbreaking to completion.

Total Construction Jobs: The project is projected to create approximately 130 construction jobs. The following subcontractors would be involved in the building process: Security System, Flooring, HVAC, Electrical, Plumbing, Technology, Foundation, Drywall, Framing, Masonry, Concrete, Roofing, Tiling, Painting/Wallcovering, Landscaping, Windows, Exterior/Interior Doors, and Fire Protection.

Union Labor involvement: The hospital is open to employing union workers, ensuring fair wages and benefits. This collaboration with construction unions could provide quality jobs and maintain high safety and workmanship standards.

Local Economy Boost: The construction phase will inject millions of dollars into the local economy through wages and the procurement of materials from local suppliers. It will also allow the space to collaborate with local agencies and very needed Day Care Center.

Healthcare Positions: The new building will require an estimated additional 27 healthcare professionals, including doctors, nurses, technicians, support and administrative staff.

Support Staff: Approximately 9 new positions for maintenance, food services, and security personnel will be created.

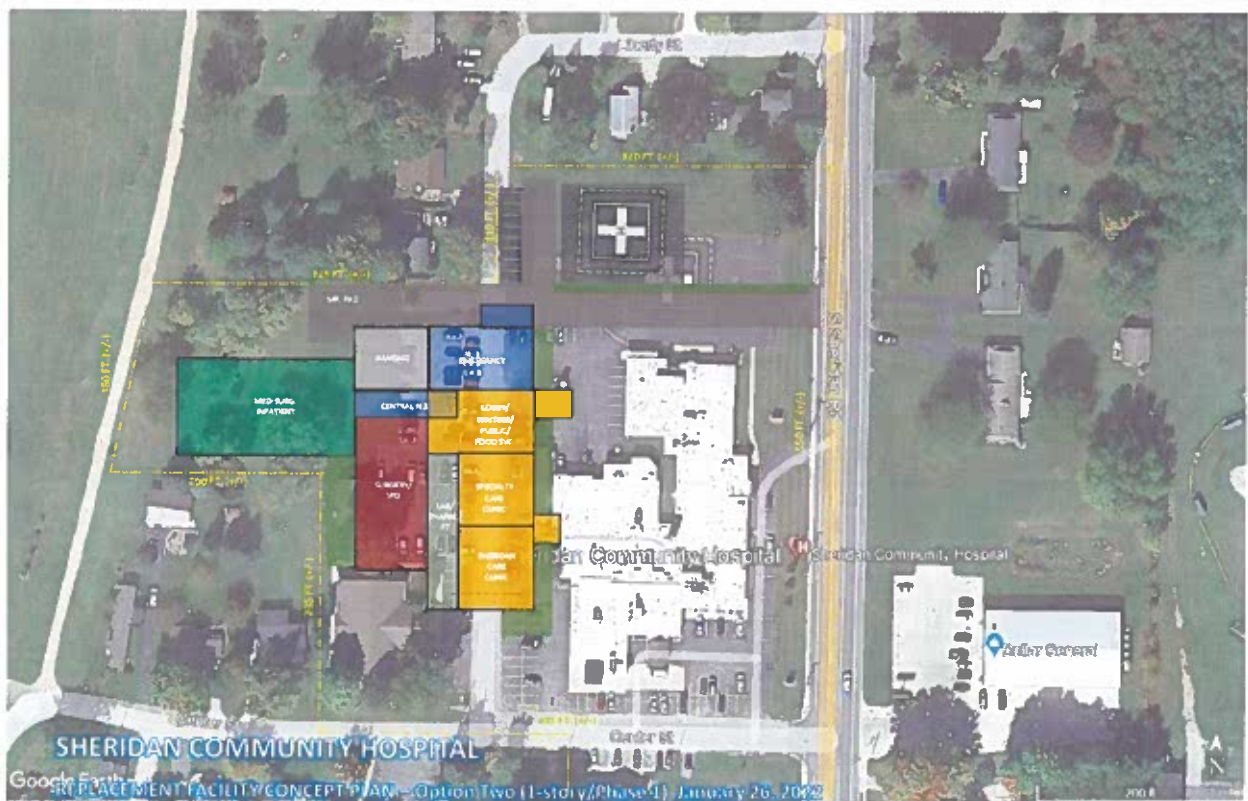
Current Workforce: 100% of the hospital's existing 170 employees will be retained, benefiting from the improved facilities and increased capacity to provide better care in rural America.

Enhanced Efficiency: The new building will streamline operations, potentially improving job satisfaction and retention rates among current employees and provide faster, smoother triage and care of patients.

Increased Healthcare Capacity: The new facility will allow the hospital to perform an additional 350 surgeries for patients annually, reducing wait times and improving health outcomes. It will also allow for near home post hospital rehabilitation.

Revenue Generation: Increased patient intake and enhanced services are expected to boost the hospital's revenue by \$15 million annually.

Community Health Benefits: Better healthcare facilities can attract more healthcare professionals to the area, improving the overall health profile of the community and increasing the health of the local population.





Sheridan Community Hospital

301 N. Main St. • P.O. Box 279 • Sheridan, MI 48884

Phone: 989-291-3261 • Fax: 989-291-0008 • www.sheridanhospital.com

Sheridan Care Clinic

303 N. Congress St. • P.O. Box 279 • Sheridan, MI 48884

Phone: 989-291-5077 • Fax: 989-291-5348 • www.sheridanhospital.com

Members of Sheridan Community Hospital Board of Directors

Jerry Rizqallah - Chair

Lili Petricevic – CEO

James Dimitriou – Board Member

Newton Mulama – Board Member

Bobbi McColley – Board Member

Additional Support Letters Received by Sheridan Community Hospital

Thomas Ginster, Greenville City Prosecutor and Prosecutor-Elect

Christopher Johnston – Montcalm County Commissioner, District 2

Charlie Mahar – Montcalm County Commissioner, District 5

Brenda Taeter – Montcalm County Controller

Sarin Hoogeveen – Lakeview United Church of Christ Moderator

Susan Griffin – Sheridan Post Office

Mechela Anderson – Treasurer of Central Montcalm Lions Club

Larry Beardslee – Central Montcalm Lions Club

Richard Langin – Secretary of Central Montcalm Lions Club

Barry Anderson – President of Central Montcalm Lions Club

James Floyd – Shiloh Community Church

Judy Emmons – Michigan Senator 33rd District – Retired

Patricia Rockafellow – Sheridan Community Hospital Advisory Board

Daryl Bush – President of Bush Hardware

Eric McKay – Sheridan Village President

Edward Lingeman – Sheridan Village Superintendent

Max Lehman – President of Big L Lumber

Andy Ross – Evergreen Twp. Supervisor

Mary Peterson – Sidney State Bank



CENTRAL MONTCALM PUBLIC SCHOOLS

1480 S. Sheridan Road | Stanton MI 48888
989-831-2000

September 10, 2024

To Whom It May Concern,

I am writing in support of the construction of a new hospital for Sheridan Community Hospital. As someone who is passionate about the Sheridan/Central Montcalm County Community, I believe this project has the potential to make a real impact in our community.

We are dealing with a facility that is more than 60 years old and is out of date. This has had a negative impact on the hospital's ability to deliver the full range of services required by our community. A new facility would enable Sheridan Community Hospital to enhance the quality healthcare they currently provide by giving them a modern facility for the treatment of the residents of our community. This is a pressing issue that demands immediate attention and action.

The potential impact of this project is significant. Per Statistics from the 2019 US Census Bureau, we have 4,496 elders over age 75 in Montcalm County. This number has nothing but grown since 2019. Younger population tends to congregate in urban areas, thus rural spaces are populated mostly with adults 45 and older and retirees. As our population continues to age, it becomes more and more vital to have centralized, significant health care! Montcalm county's median household income runs around \$49,448. This is not much above poverty levels, which limits population traveling and seeking their healthcare in urban cities. Thus, they would rather delay their care or omit it, if not critically ill. We want our rural population healthy!

The health-related benefits are not the only advantage of a new hospital for the residents of Central Montcalm County. Our County has about 22,2249 (43%) of people that are not in the labor force. A new hospital building would bring some new jobs to the area. Furthermore, Montcalm County has about 25% of its children that are High School age, and it would help keep them in the area with the new jobs created by this new hospital. These jobs will range from healthcare professions to other non-clinical and support professions. Finally, given that this new hospital will reside in the same community as our schools, this new hospital would present our Central Montcalm Public School students and families the opportunity to receive their medical care right where they live

I strongly believe that constructing a new hospital building is the right solution for our community. Sheridan Community Hospital has a proven track record of success and has the experience and expertise to execute this project with excellence.

Thank you for considering this proposal. Your support will make a meaningful difference in the lives of our community members.

Sincerely,

C. Martin James
Superintendent

Office of Community Corrections

*PA511 Pretrial Services, Drug Testing, Cognitive Change Classes,
Substance Abuse Treatment & Residential Placement, Montcalm County*

10/15/2024

I am writing in support of the construction of the new facility for the Sheridan Community Hospital. As a community corrections manager and facilitator of treatment programs in Montcalm County, I believe the updating and modernization of Sheridan's facilities is necessary and of great importance to our community.

As a resident of Sheridan for the past 50+ years who has used the services of Sheridan Community Hospital over the years, I can personally attest to the urgent need for this project to move forward for the citizens of our community.

The construction of a new facility in Sheridan has the potential to make a real difference to the lives of people in this community. An updated facility would enhance the ability to deliver modern high quality medical care to bring Sheridan Community Hospital into step with larger communities in Michigan.

Thanks,

Kevin Everingham

Kevin Everingham, Manager
& Pretrial Service Coordinator
Office of Community Corrections
Montcalm County Sheriff's Office

Sheridan Community Hospital
301 North Main St.
Sheridan, MI 48884

February 25, 2021

Dear Ms. Petricevic, CEO,

I would like to take the opportunity to thank you and your organization for providing the COVID vaccine clinic on 2-20-21. It was such a relief to be able to get the shot close to home and not travel to the big city. The entire clinic was nicely organized and the staff was very professional and friendly. The efforts by all who assisted was very much appreciated.

The literature that was handed during the clinic was very helpful. There were new services that I was not even aware of. It is amazing the services that your little hospital has to offer.

I have lived in the community all my life and have used Sheridan Community Hospital services for many years. I am so glad that your little hospital is still a part of our community.

Sincerely,


Diana J. Sprague

Sheridan Community Hospital
301 North Main St.
Sheridan, MI 48884

March 4, 2021

To Whom it May Concern,

I am writing to you to express my appreciation regarding your facility and staff when providing care during my COVID experience. It was handled very professionally.

I checked in to the Emergency Room in a very dehydrated condition. Your ER staff diagnosed my condition and began treatment. They realized that I required advanced treatment for COVID. They found a facility that could take me when there were none to be found in our local area. They made the arrangements for the transfer for further care and here was a several hours wait until I could be transferred. The staff took very good care of me during that time. They were very attentive to my needs. They provided assurance when my family could not be with me.

After being released from Alma Hospital, and being new to Sheridan Community Hospital, and seeing that my primary care provider is in Traverse City, your staff assisted me in becoming established with Eva Bartlett, MD at Sheridan Care.

I am now well on my way to recovery and very appreciative of how professional and personable Sheridan Community Hospital has been in caring for my health during this pandemic.

I am so thankful for this little hospital that is close to my home. It is difficult for a person of my age to travel to the larger facilities.

Respectfully,


Jerry C. Conrad



Sheridan Community Hospital
301 N. Main St. • P.O. Box 279 • Sheridan, MI 48884
Phone: 989-291-3261 • Fax: 989-291-0008 • www.sheridanhospital.com
Sheridan Care Clinic
303 N. Congress St. • P.O. Box 279 • Sheridan, MI 48884
Phone: 989-291-5077 • Fax: 989-291-5348 • www.sheridanhospital.com

Dear Community Member,

I am writing to share an exciting development in our community's healthcare landscape and to seek your support for an important initiative that will greatly benefit our residents.

As you may be aware, Sheridan Community Hospital has been diligently working towards expanding our healthcare services to better meet the needs of our growing community. In last four years we have increased our services to 13 service lines thus far. After thorough considerations and consultation, we continue to seek support for our intention to build a new hospital building that will enhance improve access to high-quality healthcare services and provide state-of-the-art facilities for our patients in this community, as they deserve the same type of care and accommodations as our urban communities.

The construction of this new hospital building is not just about bricks and mortar; it represents a significant investment in the health and well-being of our community and its economy. With newer facilities and advanced medical technology, we will be able to offer a wider range of healthcare services in your back yard, improve patient outcomes, and elevate the overall standard of care for our residents.

However, we cannot accomplish this ambitious undertaking alone. We are reaching out to community leaders, organizations, and stakeholders like yourself to request your support for this project. Your endorsement and advocacy will play a crucial role in securing the necessary resources and approvals to move forward with the construction of the new hospital building.

We believe that by coming together as a community, we can make this vision a reality and ensure that our residents have access to the quality healthcare services they deserve. We are committed to keeping you informed and involved throughout the process and welcome any feedback or suggestions you may have.

Thank you for considering our request for support. We are confident that with your partnership, we can build a healthier and stronger community for generations to come. By signing below, you are pledging your support in our endeavor.

Please feel free to contact me directly at lpetricevic@sheridanhospital.com or by phone 989-291-6222 if you have any questions or would like to discuss this further.

With Warm Regards,

A handwritten signature in blue ink, appearing to read "Lili Petricevic", written over a horizontal line.

Signature

A handwritten signature in blue ink, appearing to read "Eric McKay", written over a horizontal line.

Lili Petricevic CEO

Sheridan Community Hospital

(Type the name)

ERIC MCKAY
Sheridan Village President

PETERSON GINSTER PLC
ATTORNEYS AND COUNSELORS

KURT D. PETERSON
DIRECT: (616) 754-4611
KURT@PETERSONGINSTER.COM

203 SOUTH LAFAYETTE ST., PO BOX 5
GREENVILLE, MI 48838

THOMAS A. GINSTER
DIRECT: (616) 754-5303
TOM@PETERSONGINSTER.COM

16 October 2024

Hon. Tom Visack
Secretary
United States Department of Agriculture
1400 Independence Ave. SW
Washington, DC 20250

Dear Governor / Secretary Visack,

I am writing in support of Sheridan Community Hospital's ("SCH") application for a grant to expand its current facilities.

Like many rural hospitals, SCH's modest and outdated facilities belie the outstanding care it provides to our rural community.

From a law enforcement perspective, the hospital is the only medical facility in proximity to the county jail. The recent closure of another hospital in our county (Kelsey Hospital, Lakeview) amplifies the need for another facility to provide timely medical intervention for those incarcerated or arrested with pressing medical needs, including fentanyl overdoses. In such cases, time is of the essence to stabilize these individuals, and in serious cases, to transport them by ambulance or helicopter to a regional hospital.

For suspected drunken and drug-intoxicated drivers, local police agencies typically have to drive another 40-minute round trip to the next nearest facility to draw blood from an OWI suspect who refuses to submit to a breath test. This critical time can be significant when attempting to hold those responsible for serious traffic accidents and fatalities while intoxicated.

The hospital's current facilities do not provide a collocated entrance for detainees needing treatment or for service of blood-draw search warrants. Many times, domestic violence and sexual assault victims unwittingly are in sight and sound of their abusers, following their arrests. Detainees and county jail inmates are in plain view of seniors and families seeking care. I am sure you would agree that this is less than an ideal situation.

These are a few illustrations of why a new SCH facility is so desperately needed. Such an expansion will undoubtedly save lives and advance the cause of justice in our community.

Sincerely,



Thomas A. Ginster
Greenville City Prosecutor and Prosecutor-Elect
Montcalm County, Michigan



Sheridan Community Hospital
301 N. Main St. • P.O. Box 279 • Sheridan, MI 48884
Phone: 989-291-3261 • Fax: 989-291-0008 • www.sheridanhospital.com
Sheridan Care Clinic
303 N. Congress St. • P.O. Box 279 • Sheridan, MI 48884
Phone: 989-291-5077 • Fax: 989-291-5348 • www.sheridanhospital.com

Dear Community Member,

I am writing to share an exciting development in our community's healthcare landscape and to seek your support for an important initiative that will greatly benefit our residents.

As you may be aware, Sheridan Community Hospital has been diligently working towards expanding our healthcare services to better meet the needs of our growing community. In last four years we have increased our services to 13 service lines thus far. After thorough considerations and consultation, we continue to seek support for our intention to build a new hospital building that will enhance improve access to high-quality healthcare services and provide state-of-the-art facilities for our patients in this community, as they deserve the same type of care and accommodations as our urban communities.

The construction of this new hospital building is not just about bricks and mortar; it represents a significant investment in the health and well-being of our community and its economy. With newer facilities and advanced medical technology, we will be able to offer a wider range of healthcare services in your back yard, improve patient outcomes, and elevate the overall standard of care for our residents.

However, we cannot accomplish this ambitious undertaking alone. We are reaching out to community leaders, organizations, and stakeholders like yourself to request your support for this project. Your endorsement and advocacy will play a crucial role in securing the necessary resources and approvals to move forward with the construction of the new hospital building.

We believe that by coming together as a community, we can make this vision a reality and ensure that our residents have access to the quality healthcare services they deserve. We are committed to keeping you informed and involved throughout the process and welcome any feedback or suggestions you may have.

Thank you for considering our request for support. We are confident that with your partnership, we can build a healthier and stronger community for generations to come. By signing below, you are pledging your support in our endeavor.

Please feel free to contact me directly at lpetricevic@sheridanhospital.com or by phone 989-291-6222 if you have any questions or would like to discuss this further.

With Warm Regards,

A handwritten signature in blue ink, appearing to read "Lili Petricevic", written over a horizontal line.

Signature

A handwritten signature in blue ink, appearing to read "Andy Ross", written over a horizontal line.

Lili Petricevic CEO

(Type the name)

A handwritten signature in blue ink, appearing to read "Andy Ross", written over a horizontal line.

Sheridan Community Hospital

Evergreen Twp. Supervisor



91ST DISTRICT
STATE CAPITOL
P.O. BOX 30014
LANSING, MI 48909-7514

MICHIGAN HOUSE OF REPRESENTATIVES

PAT OUTMAN
STATE REPRESENTATIVE

PHONE: (517) 373-3436
FAX: (517) 373-9698
PatOutman@house.mi.gov
www.RepOutman.com

April 15, 2025

Rep. Ann Bollin
Chair, Appropriations Committee
P.O. Box 30014
Lansing, MI 48909

Chair Bollin,

Attached with this legislatively directed spending request please find a letter from Rep. Phil Green, chair of the Appropriations Subcommittee on Public Health, co-sponsoring the request.

I greatly appreciate Rep. Green's willingness to sign on to this much needed project and look forward to further discussing it with you in the future.

Sincerely,

A handwritten signature in blue ink that reads "P. Outman".

Pat Outman
State Representative
91st District



67TH DISTRICT
STATE CAPITOL
P.O. BOX 30014
LANSING, MI 48909-7514

MICHIGAN HOUSE OF REPRESENTATIVES

PHIL GREEN
STATE REPRESENTATIVE

PHONE: (517) 373-0587
FAX: (517) 373-9430
RepPhilGreen@house.mi.gov
www.RepPhilGreen.com

April 15, 2025

Lili Petricevic, CEO
Sheridan Community Hospital
301 N. Main Street
Sheridan, MI 48884

Dear CEO Petricevic,

Dear CEO Petricevic,

I am writing to express my full support for the appropriations request submitted by Representative Outman on behalf of Sheridan Community Hospital.

With a longstanding tradition of serving the residents of Montcalm, Isabella, and Ionia Counties—regions where the poverty rate stands at 13.3%—Sheridan Community Hospital plays a critical role in ensuring access to healthcare for underserved populations. During my recent visit to your facility, I saw firsthand the limitations of the current structure, which dates back to the 1950s.

The proposed construction of a new, 61,385-square-foot hospital represents a vital and much-needed modernization. To ensure the success of this important project, the State of Michigan's 25% Federal Grant Match is essential.

Thank you for your continued commitment to providing quality healthcare to these communities.

Phil Green

State Representative
67th District